

Streetcar Performance Report: May 2017



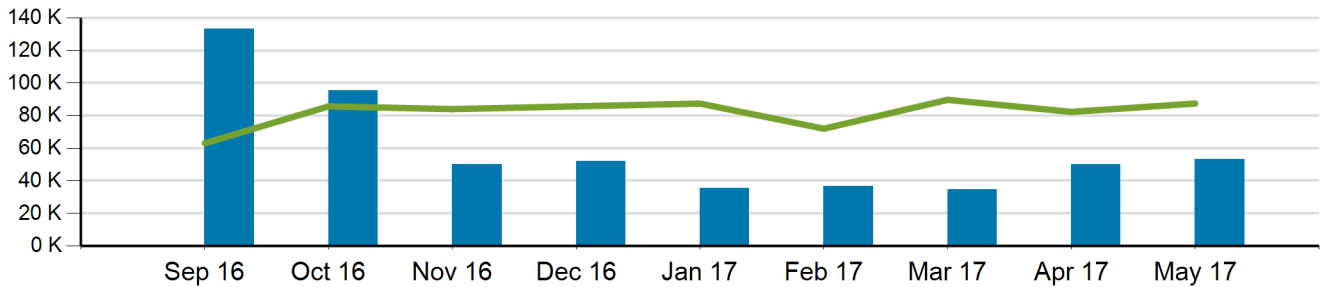
Year-To-Date Ridership

	2017	2016	% Chg	Budget	% Chg
Total	209,772	0	0.0%	418,937	-49.9%

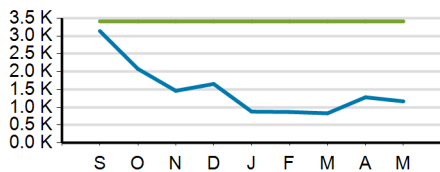
May 2017 Ridership

	2017	2016	% Chg	Budget	% Chg
Total	53,116	0	0.0%	87,439	-39.3%

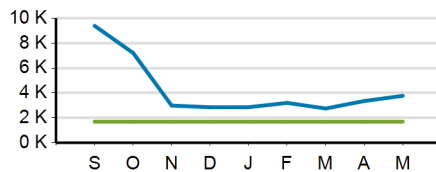
Total Ridership



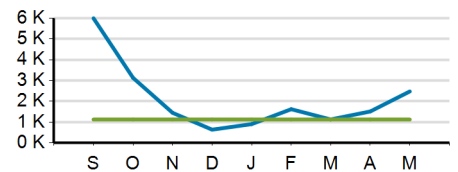
Average Ridership: Weekday



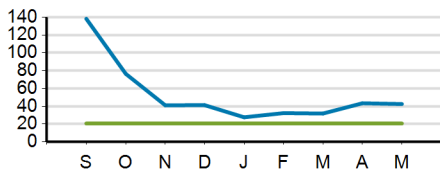
Average Ridership: Saturday



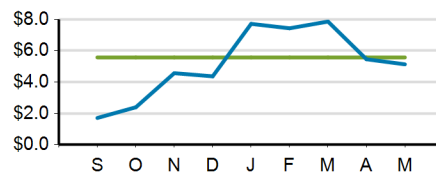
Average Ridership: Sunday



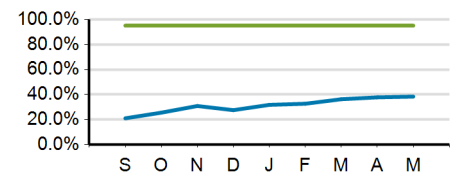
Passengers per Hour



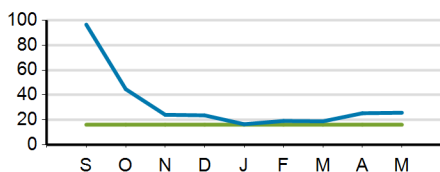
Cost per Passenger



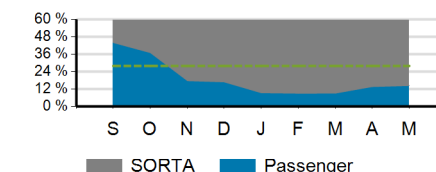
On-Time Performance



Passengers per Trip



Service Cost Sharing



■ Current Year
 ■ Prior Year
 ■ Target

